

# 2023 Water Main Replacement Project RFQ

Cristina de la Garza, P.E

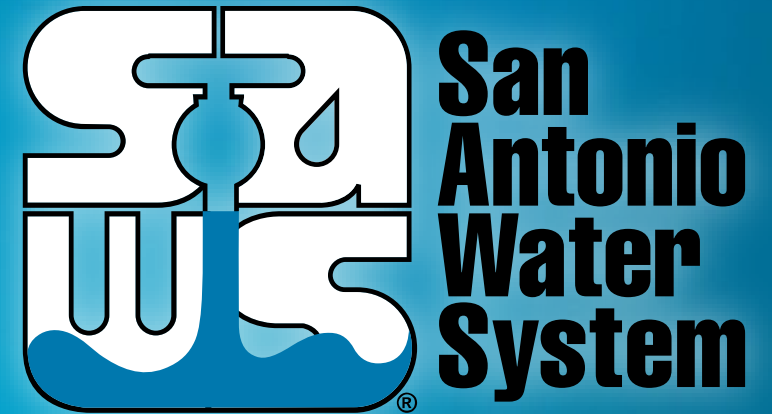
Manager – Water & Sewer Pipelines

Marisol V. Robles

Manager – SMWVB Program

Roxanne Lockhart

Contract Administrator



Non-Mandatory Pre-Submittal Conference  
December 6, 2022

MAKING SAN ANTONIO  
**WATERFUL** 

# WebEx Housekeeping

- Stay muted during the entire presentation.
- Sign-in using the chat ensuring to select everyone from the drop-down menu.
- Ask questions at any time during the presentation utilizing the chat. Questions will be addressed at the end of the presentation. Ensure to direct your questions to the entire group by selecting everyone from the drop down. All formal responses to questions will be provided via an Addendum.
- Audio only attendees may follow along on the presentation that has been posted to the SAWS solicitation website.

# Oral Statements

Oral statements or discussions during this Pre-submittal Conference will not be binding, nor will they change or affect the RFQ or the terms and conditions of the contract. Changes, if any, will be addressed in writing only via an Addendum.

# Agenda

- RFQ Objective
- SMWB Requirements
- Selection Process
- RFQ Schedule
- Addenda
- Submitting a Response
- Submittal Deadline
- Scoring Criteria
- Respondent Questions
- Communication Reminders
- Project Scope
- Overview of Project Locations
- Project Implementation Schedule
- Design Considerations
- Cost Estimates – Design Phase
- Questions

# RFQ Objective

- To procure professional engineering services, which will require work to be performed by qualified professional engineering firms
- The selected professional engineering firm(s) shall provide engineering services entailing planning, engineering evaluations, studies, reports, preliminary engineering, design, bid, construction, start-up/commissioning, and overall project management services for the design and construction of the Project.
- SAWWS anticipates awarding contracts to more than one Consultant as a result of this RFQ. At SAWWS sole discretion, SAWWS may award any project within this RFQ regardless of the projects identified on Respondent's Project Submittal Identification Form.

# Aspirational SMWB Goal

<b>Industry</b>	<b>Aspirational SMWB Goal</b>	<b>Description</b>
Engineering and Other Professional Services	40%*	Points assessed on tiered scale

\*40% of the value of the contract.

# SMWB Requirements

- SMWB Certification accepted from the following entities:
  - South Central Texas Regional Certification Agency (SBE, MBE, WBE)
  - Texas H.U.B.
- RFQ Scoring:
  - Local Office
  - Small Business Enterprise (SBE) certification required.

# Post Award: Subcontractor Payment & Utilization Reporting (S.P.U.R.) System

[www.SAWS.SMWBE.com](http://www.SAWS.SMWBE.com)

San Antonio Water System

OUR MAIN SITE

CONTACT SUPPORT

## Subcontractor Payment & Utilization Reporting System

Log In

### System Training

Learn how to fully utilize our system with a live trainer

Training

### About the System

Learn more about this system and how it works today

Information for Vendors

### Account Access

Lookup Vendor accounts or reset user passwords

Account Lookup

Forgot Password

The Subcontractor Payment & Utilization Reporting System is powered by B2Gnow Software © Copyright 2018.

2023 Water Main Replacement Project





# SMWVB Questions

Questions related to the SMWVB Program, the Good Faith Effort Plan (GFEP), or finding certified subconsultants may be directed to the SMWVB Program Manager until the RFQ is due.

**Marisol V. Robles**

SMWVB Program Manager

Email: [Marisol.Robles@saws.org](mailto:Marisol.Robles@saws.org)

Telephone: 210-233-3420

## Selection Process

- SOQs reviewed for responsiveness
- Technical Evaluation Committee scores qualification statements based on evaluation criteria published in the RFQ
- Interviews held, if necessary
- Selection Committee reviews scores and recommends firms
- Good Faith Effort Plan will be evaluated and scored
- Negotiation with selected consultants
- Board Award

# Selection Process

- If there is a change to key team members (prime or sub-consultant) identified on Respondent's organizational chart, notify SAWWS in writing as soon as possible
  - SAWWS may allow Respondent to replace the key team member with an alternate member who possesses equal or better qualifications and experience
- Also, per SAWWS' Ethics Policy, a former SAWWS employee may not serve in a lead role as a key team member and/or participate in the negotiation of a contract for two (2) years after separating from SAWWS.
  - This may result in the Respondent's proposal being found non-responsive or a reduction in points during the evaluation

# RFQ Schedule



The dates listed above are subject to change without notice.

# Respondent Questions

Must be submitted in writing via e-mail (preferred) or fax no later than December 13, 2022, by 4:00 pm to:

**Roxanne Lockhart**

Contract Administration Department

San Antonio Water System

[Roxanne.Lockhart@saws.org](mailto:Roxanne.Lockhart@saws.org)

# Addenda

- Register as a vendor with SAWS Vendor Registration and Notification
- More than one addendum may be posted on the SAWS website.
- Check SAWS website often and prior to submitting your proposal
- Known addendum changes are:
  - Responses to questions

# Submitting a Response

## Helpful Reminders

- Thoroughly read the RFQ document
- Maximize points by addressing all items in the order identified in the RFQ
- Use fillable forms as response format as directed
- Be specific - Avoid “boiler plate” responses for the narrative portions of the RFQ
- Page limit - Sixteen (16) including fillable evaluation criteria forms (which do not count towards the page limit).
  - One 11 x17 page is allowed that also does not count.
- The cover page/letter, divider pages, etc. also do not count towards page limit (See page 14 of the RFQ IV, B.3.)

# Submitting a Response

## Helpful Reminders

- Contact the SMWVB Program Manager for assistance, if necessary
- Perform a thorough QA/QC on your proposal prior to submitting
- Identify interest in project(s) utilizing the Project Submittal Identification Form
- Utilize the Submittal Response Checklist to ensure all required items are included in the proposal
- Utilize Evaluation Criteria forms where indicated, which can be found in Word format on the SAWWS website



# Submittal Deadline

- Submittal deadline is **January 17, 2023 at 2:00 pm (CST)**
- “PS-00140\_2023 Water Main Replacement Project RFQ Response” and name of Respondent should be clearly identified on the subject line of the email and/or fax.
- Submit electronic copy
  - [contracting@saws.org](mailto:contracting@saws.org)
  - Email size limit of 10MB
  - One (1) pdf searchable file with bookmarks
  - SAWS recommends submitting your proposal at least two (2) hours prior to the deadline
- Late responses will not be accepted and will not be unopened

# Scoring Criteria

Evaluation Criteria	Weight (points)
Team Experience and Qualifications	30
Similar Projects and Past Performance	30
Project Understanding and Approach	25
SMWB Participation (Good Faith Effort Plan)	15
<b>TOTAL</b>	<b>100</b>

## Team Experience and Qualifications (Refer to Attachment II)

- Organizational Chart – Identify all proposed “Key Personnel” and “Key Sub-consultants”
  - Provide a 1-page resume for each proposed Key Personnel. Six (6) page limit.
    - The Project Manager’s resume should be included first
  - Identify three (3) similar projects completed in the past ten (10) years.
  - Provide a list of all active projects each of the Key Personnel is currently assigned to for the duration of the Project, including the phase and percentage of time allocated to each project listed.
  - Availability Table Matrix – include the percentage of time each proposed team member shown on the organizational chart will be committed to the Project, as well as their proposed role, geographic location, and years of experience
  - Describe the composition of the proposed team including Sub-consultants, roles and responsibilities of team members, and teaming history
- \* Use Evaluation Criteria/Fillable Forms (Attachment III)**

## Similar Projects and Past Performance (Refer to Attachment II and III)

- Provide 3 **completed** projects in last 10 years which Respondent has performed services similar to those sought in this RFQ.
  - All 3 projects shall have been performed by the Respondent.
  - The proposed PM shall be an employee of the Respondent.
  - The proposed PM shall have participated in at least 2 of the 3 projects.
  - Key Personnel shall have participated in at least 2 of the 3 projects.
  - Project references, at a minimum, shall include:
    - Names of clients and location (city and state), Reference contact to include names, titles, and “current” phone numbers (verify), Key contract dates – year and duration of projects, Detailed description of project, include specific aspects that Respondents want considered in the evaluation, Explanation for why each project is similar to the Project included in this RFQ, Key Personnel and Sub-consultants’ responsibilities
- \* Use Evaluation Criteria/Fillable Forms (Attachment III)**

# Similar Projects and Past Performance

Refer to Attachment II and III

- OPCC Table – Provide cost information for the 3 completed projects submitted as it relates to the accuracy of the OPCCs
- Provide all information being requested on the form
- Stating “N/A” is not acceptable

\* Use Evaluation Criteria/Fillable Forms (Attachment III)

2023 Water Main Replacement Project

# Project Understanding and Approach

## Refer to Attachment II

- Provide a detailed approach explaining how your firm would technically execute and complete the services sought in this RFQ on time and within budget
- Select one of the projects indicated on the Project Identification Form.
- Provide innovative approaches, ideas, and recommendations.
- Provide responses to the following:
  - Familiarity with SAWS facilities and infrastructure
  - Familiarity with Project areas
  - Describe Respondent's approach to becoming familiar with local and regional market conditions influencing the design and construction decisions that will affect cost.
  - Understanding of Project related issues and difficulties (design and construction), and solutions proposed

# Project Understanding and Approach

- Provide responses to the following:
  - Understanding of coordination requirements with the involved entities/agencies, responsiveness and follow through.
  - Team approach to preparing deliverables to meet deadlines associated with fast-track SAWWS requests without compromising the quality of deliverables and Project Schedule. Discuss Respondent's schedule recovery approach relative to the schedule maintenance.
  - Identify design concepts in need of additional definition or refinement and describe your proposed approach for addressing those items during the initial phase of the project.
  - Identify risk items from design documents provided by SAWWS and describe your proposed approach for potential impacts from those items.
  - Describe your approach for coordinating with regulatory and permitting agencies to ensure buy-in and approval.

# Project Understanding and Approach

- Provide a specific and unique QA/QC plan for this project
  - Plan to identify, track, and resolve issues
  - Describe how the independent QA/QC team will review project deliverables to ensure Project is high quality and biddable, permittable, constructible, operable, maintainable and cost effective
  - Respondent's role compared to SAWS role
  - Describe accuracy and completeness of the OPCCs and how they are derived for each design phase, Respondent's familiarity with AACEs Recommended Practices 17R-97 and 56R-08
  - Describe familiarity with the use of RS Means for developing independent cost estimates for construction change orders.



# Communication Reminders

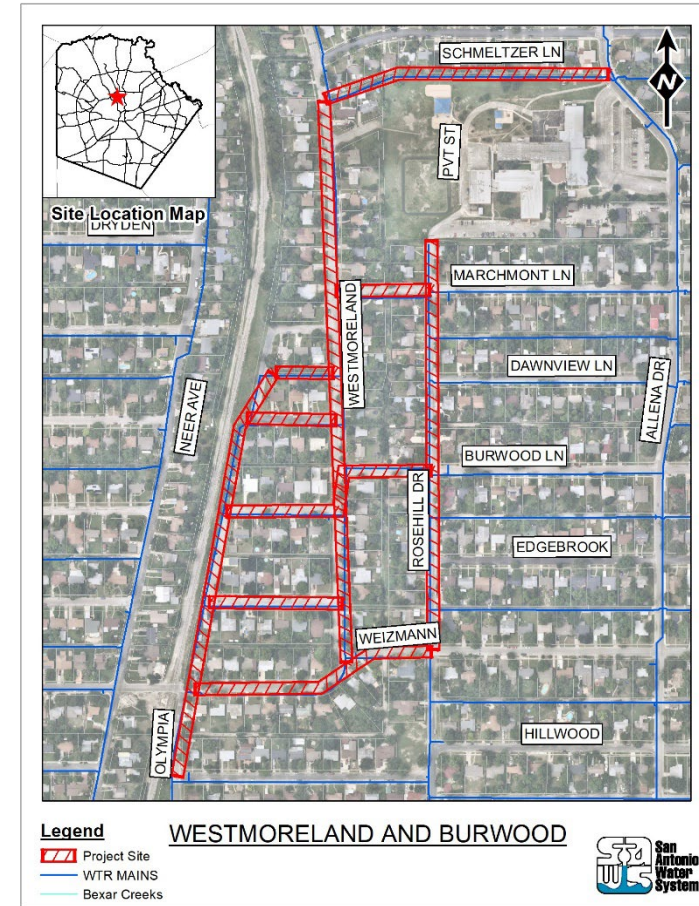
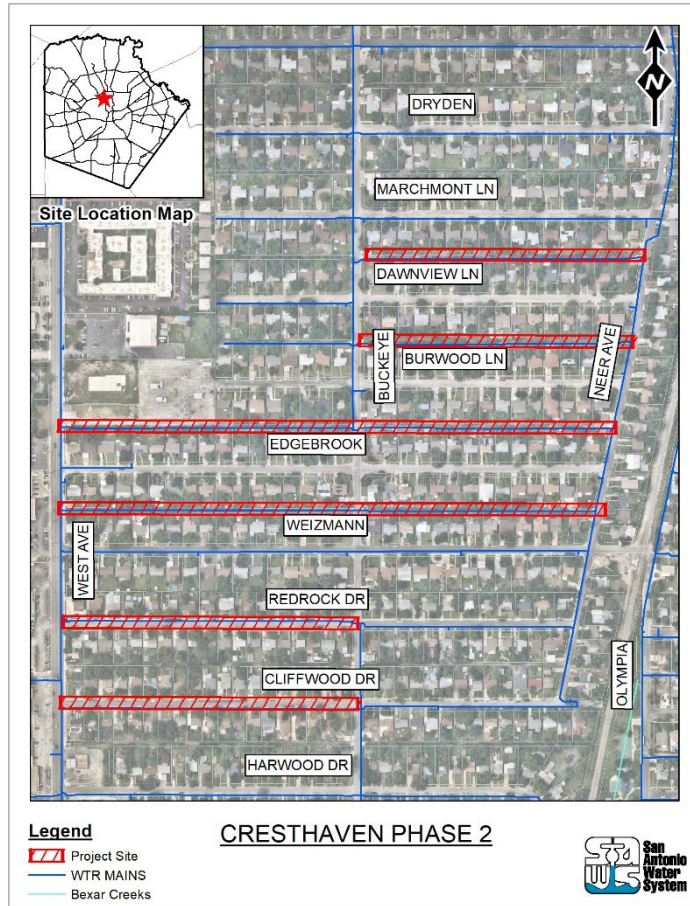
- No communication regarding the RFQ with the following:
  - SAWS Project Manager
  - Any other SAWS staff, managers, directors or VPs
  - City Council member or staff
  - SAWS Board of Trustees
- No phone calls, emails, letters, direct/indirect discussion of the RFQ
  - If submitting for the RFQ and/or doing work for SAWS, indicate this when speaking with SAWS staff, but refrain from discussing the RFQ
- From release of the RFQ to Board Award

# Project Scope

- Projects to be managed, designed, and constructed with highest regard for cost, schedule, and quality
  - 2023 Water Main Replacement Package 1-7
  - 2023 Dead End Water Main Elimination
  - Galm 24-inch Water Line
  - Geronimo Loop Interconnect
- SAWWS anticipates awarding a contract to more than one Consultant as a result of this RFQ

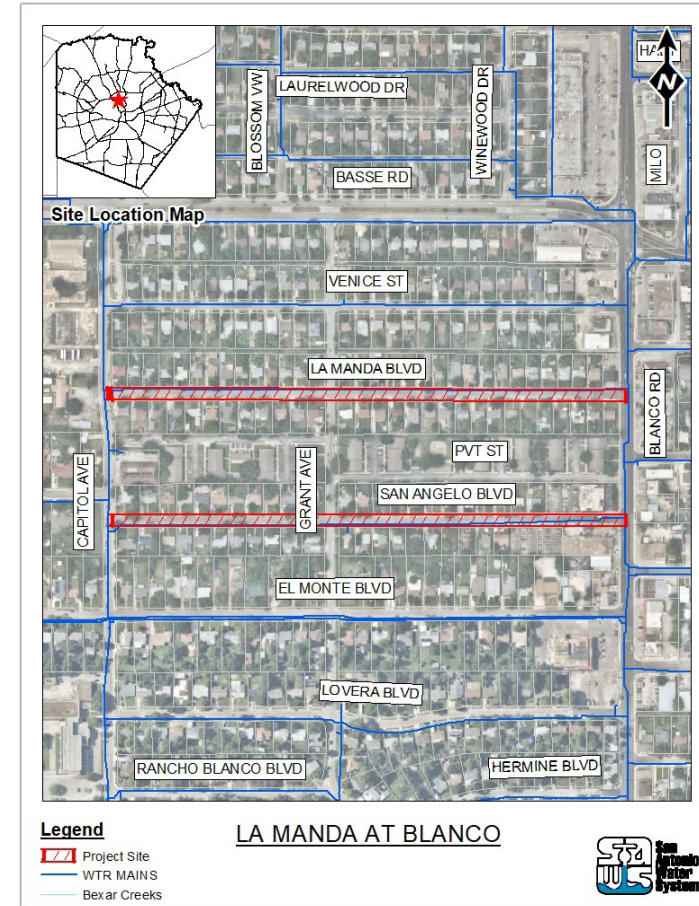
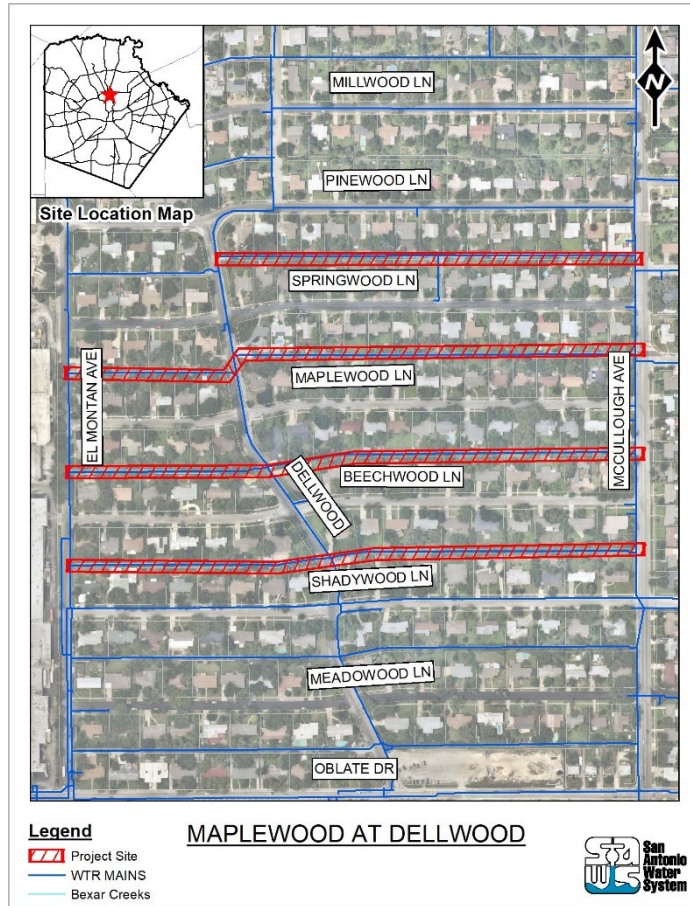
# Overview of Project Locations

## Package I



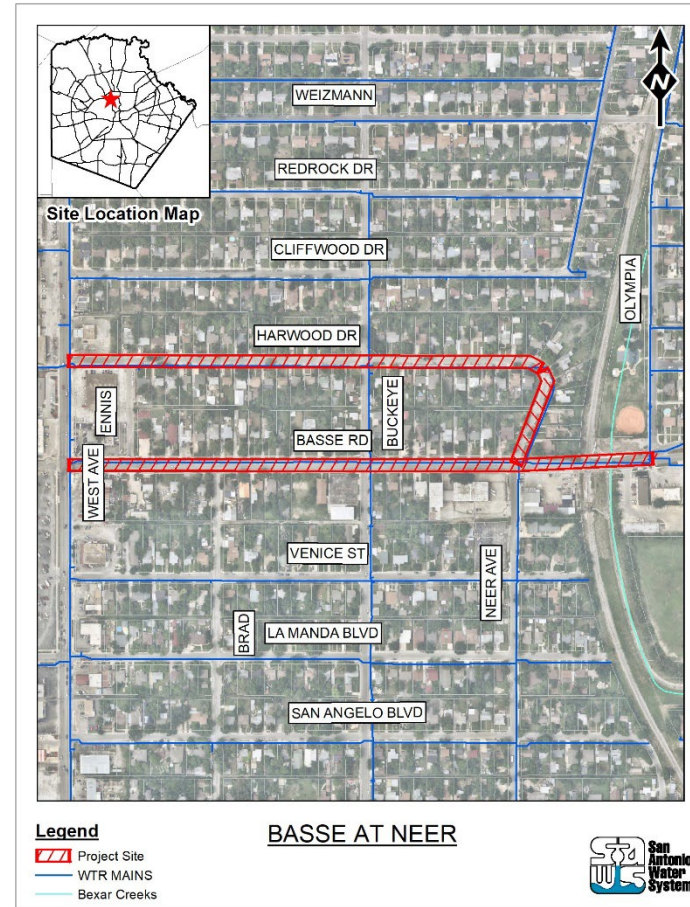
# Overview of Project Locations

## Package 2



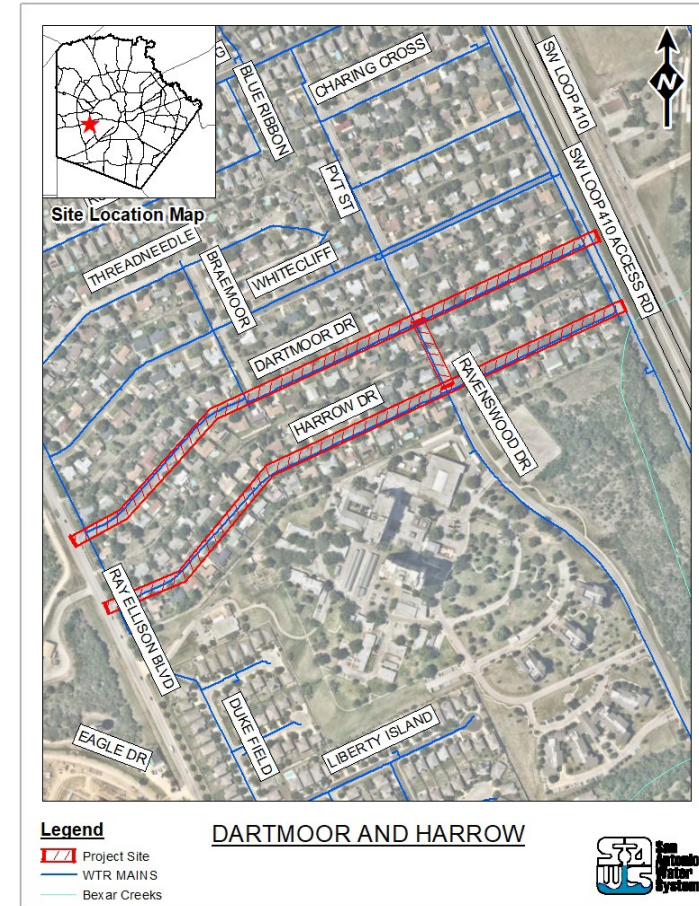
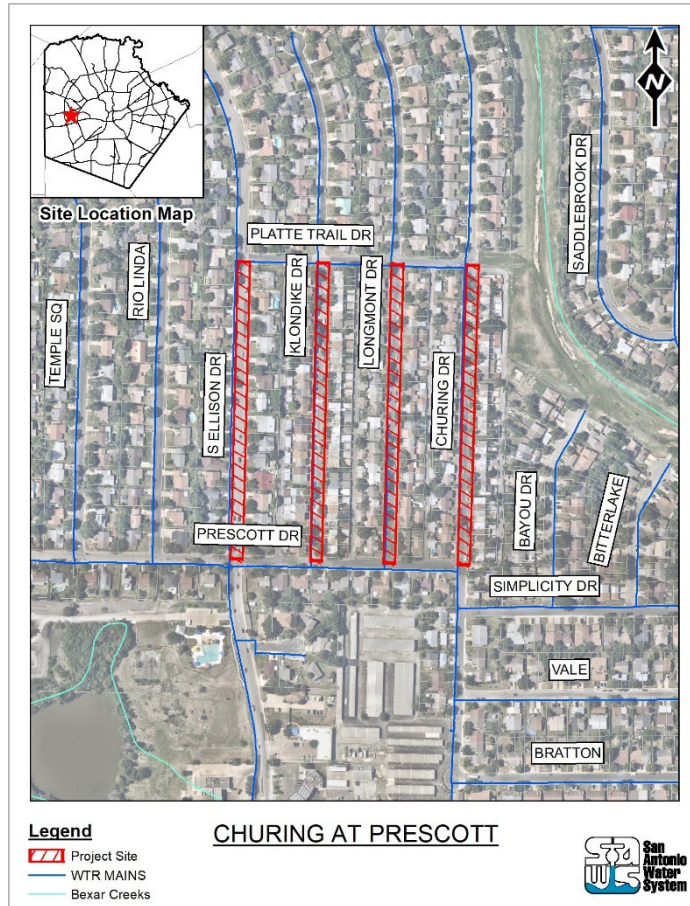
# Overview of Project Locations

## Package 2



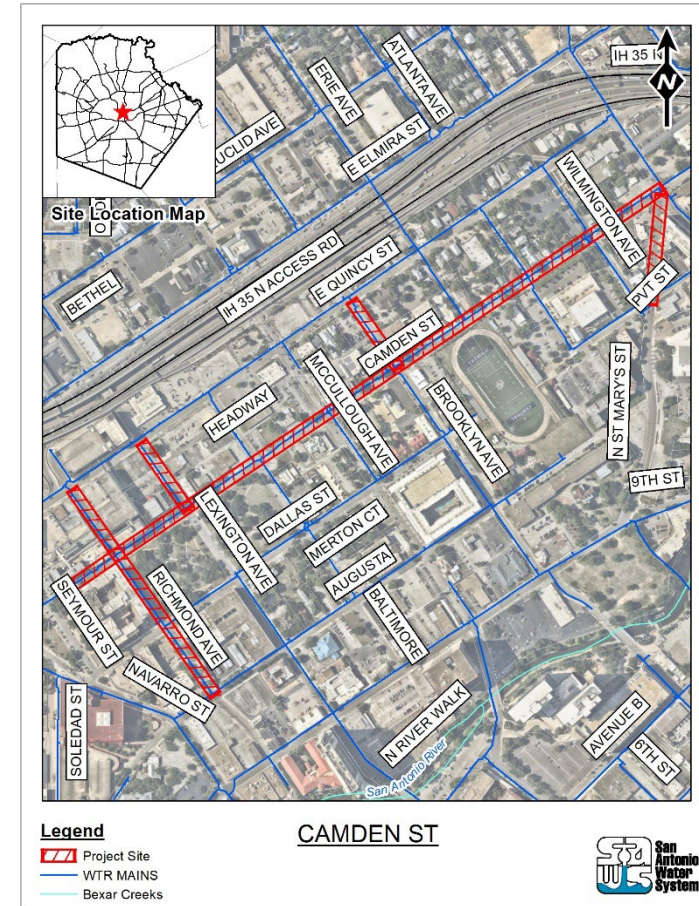
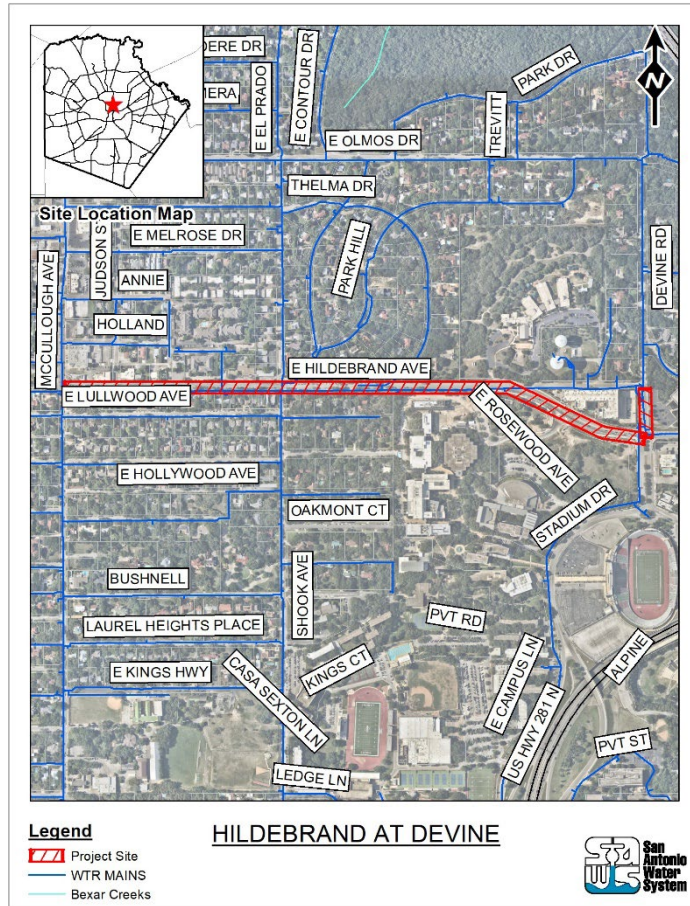
# Overview of Project Locations

## Package 3



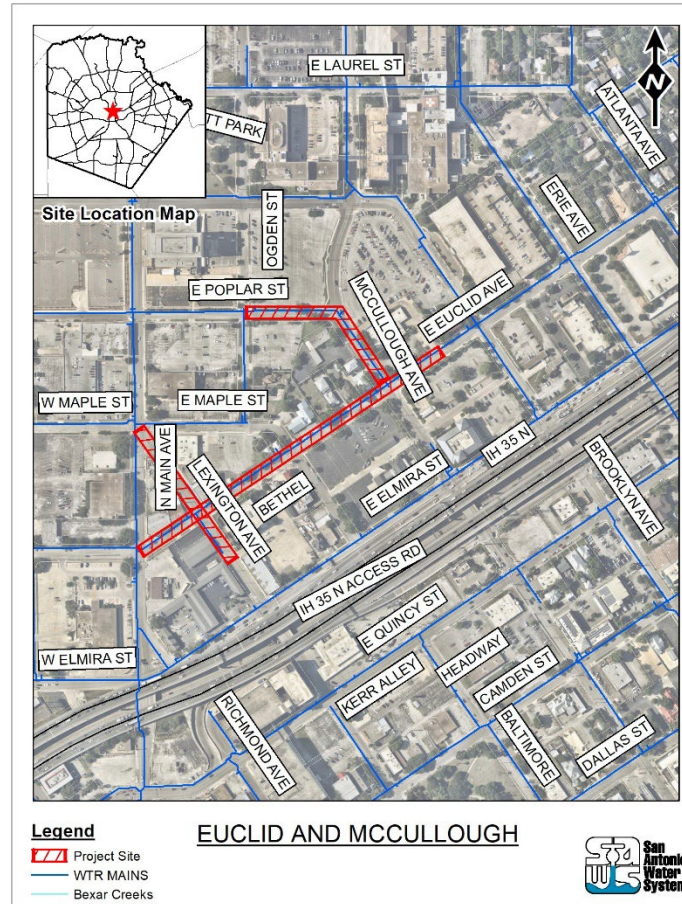
# Overview of Project Locations

## Package 4



# Overview of Project Locations

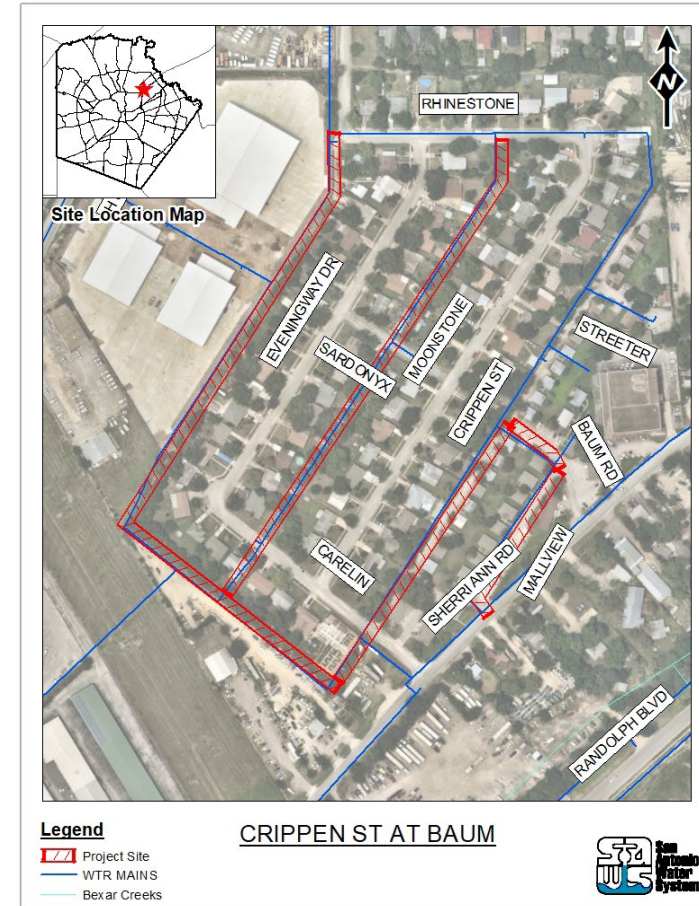
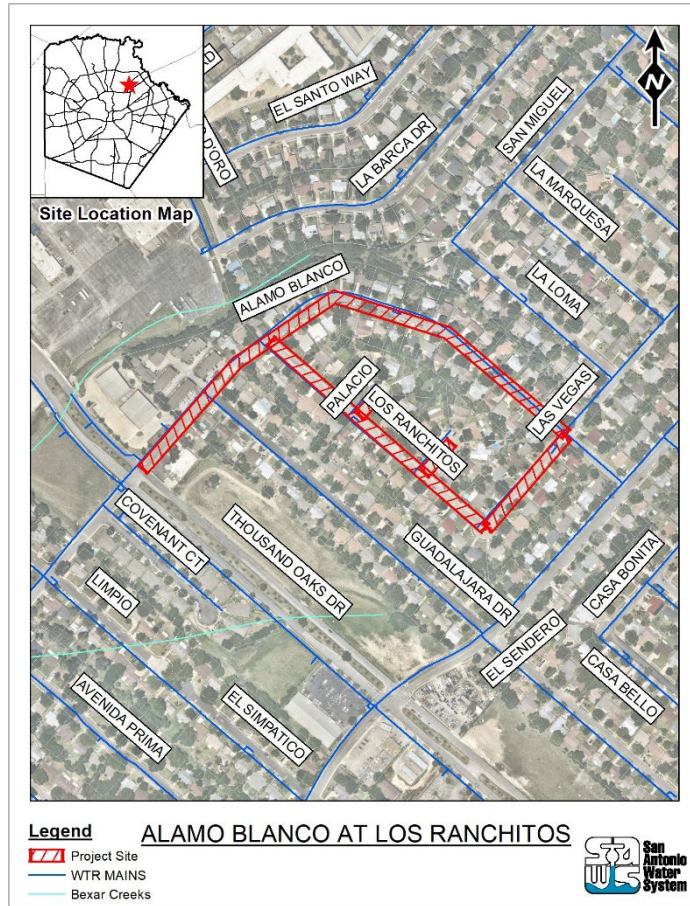
## Package 4





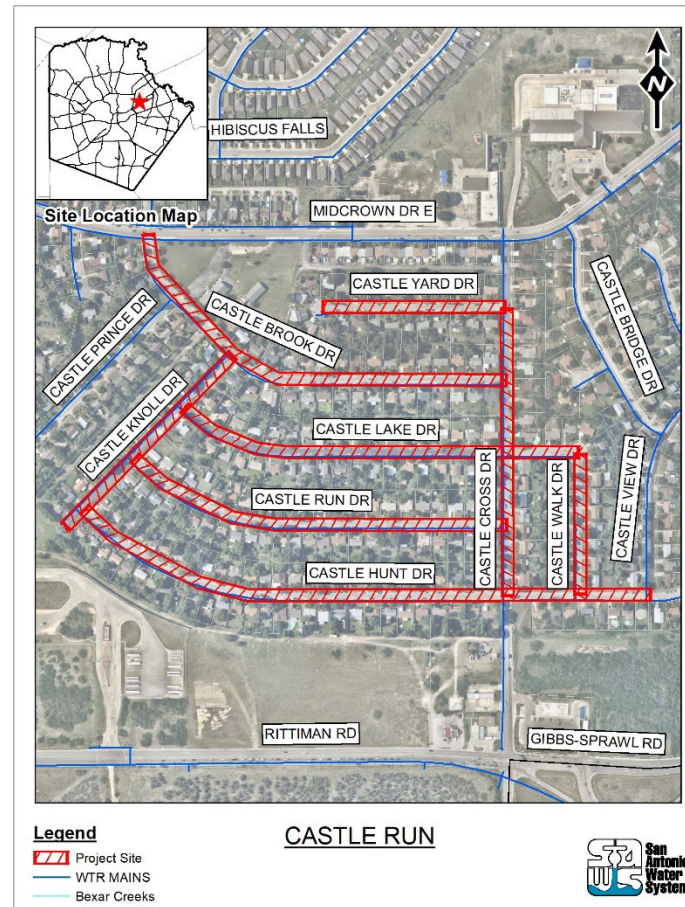
# Overview of Project Locations

## Package 5



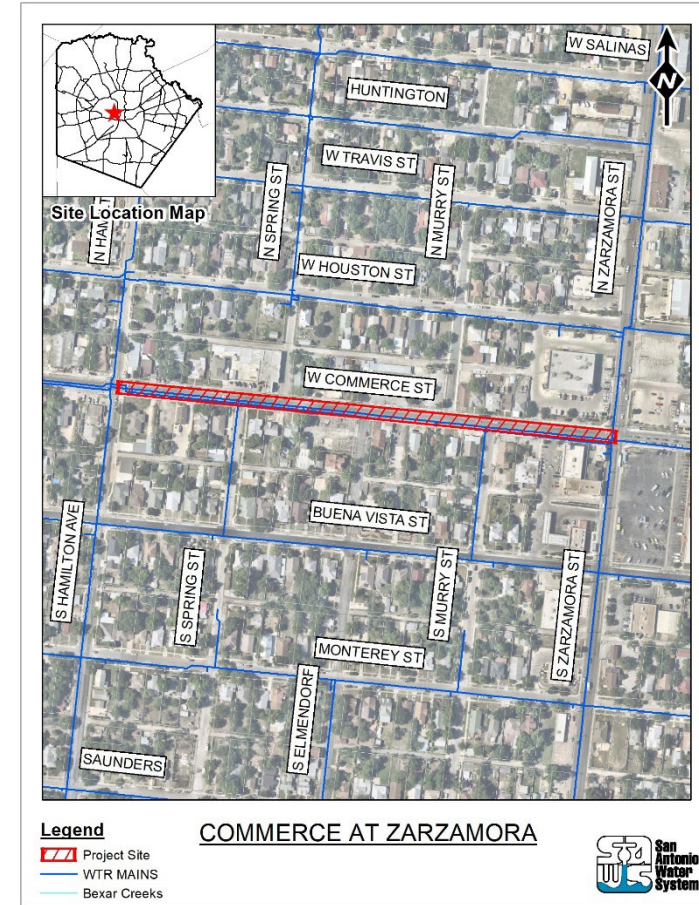
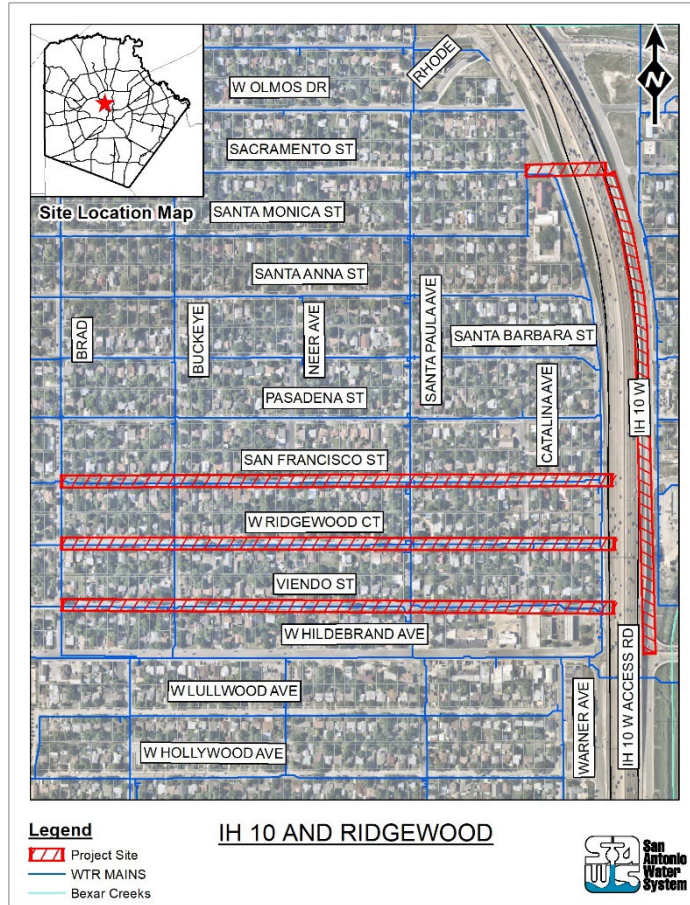
# Overview of Project Locations

## Package 5



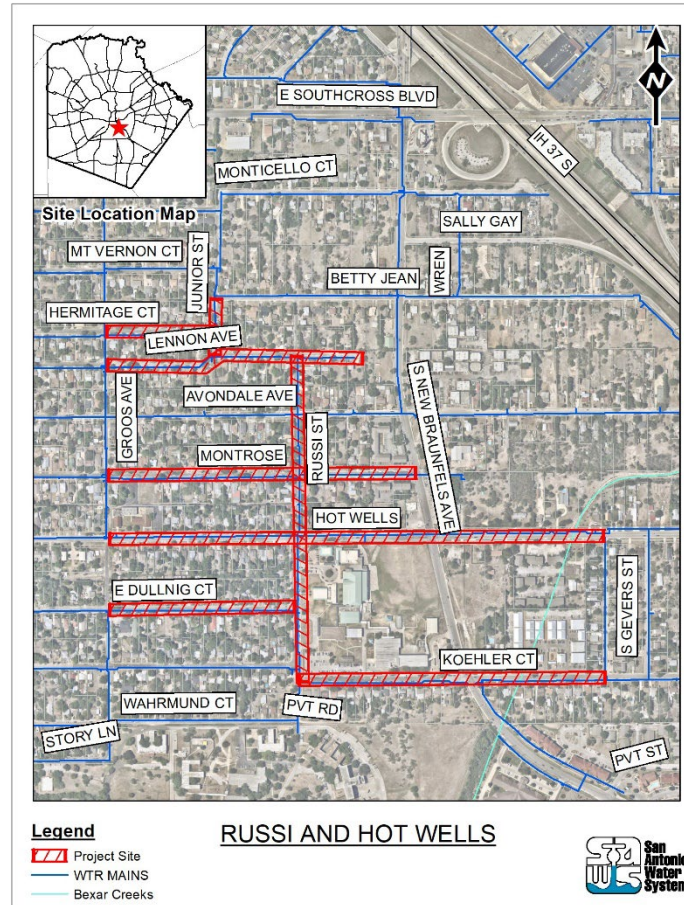
# Overview of Project Locations

## Package 6



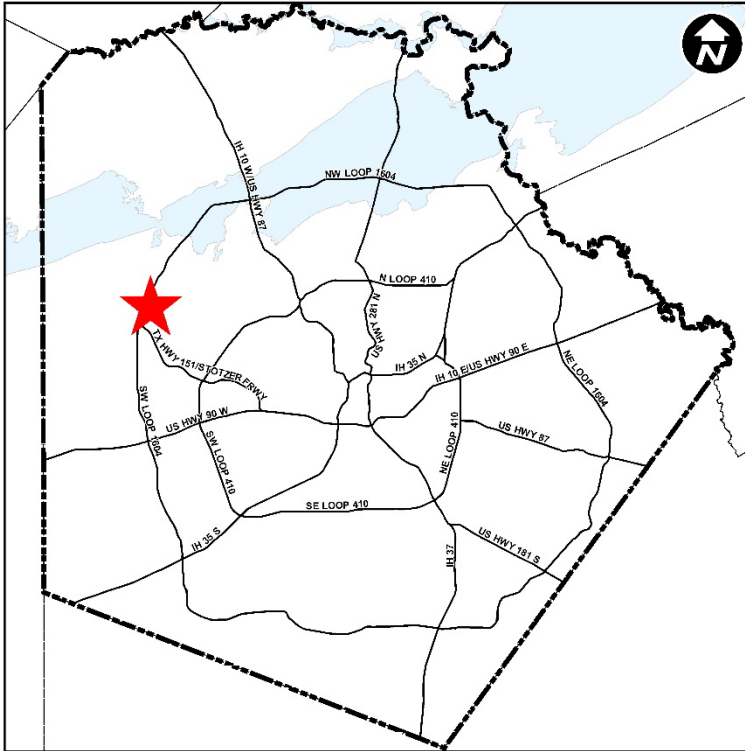
# Overview of Project Locations

## Package 7



# Overview of Project Locations

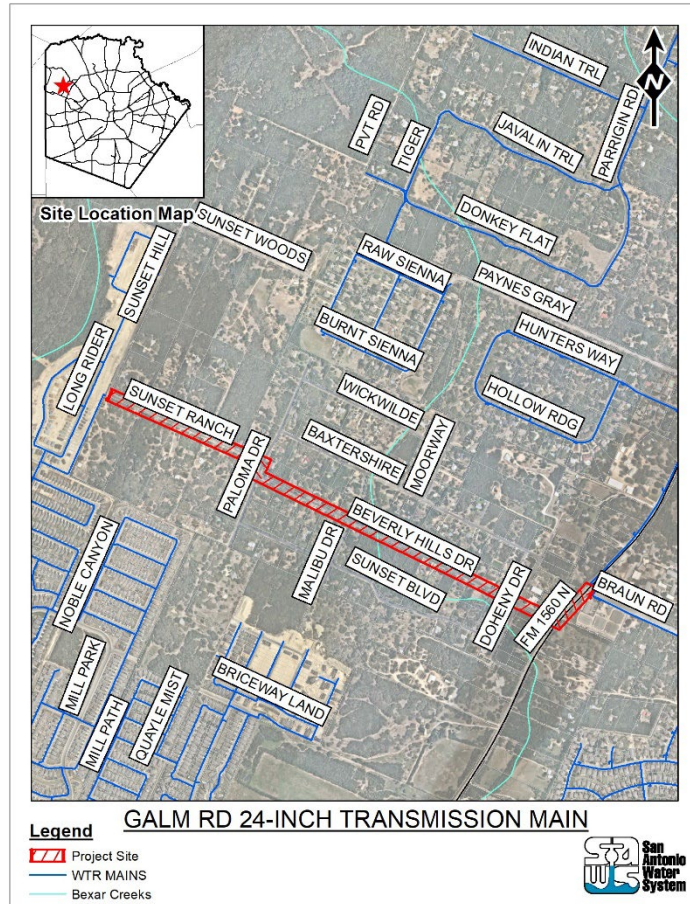
## 2023 Dead End Water Main Elimination



- This project will consist of the design of new water mains throughout the SAWS service area to eliminate DEMs by looping the water distribution system.
- Installation of new water mains may be performed by open-cut or trenchless technologies.

# Overview of Project Locations

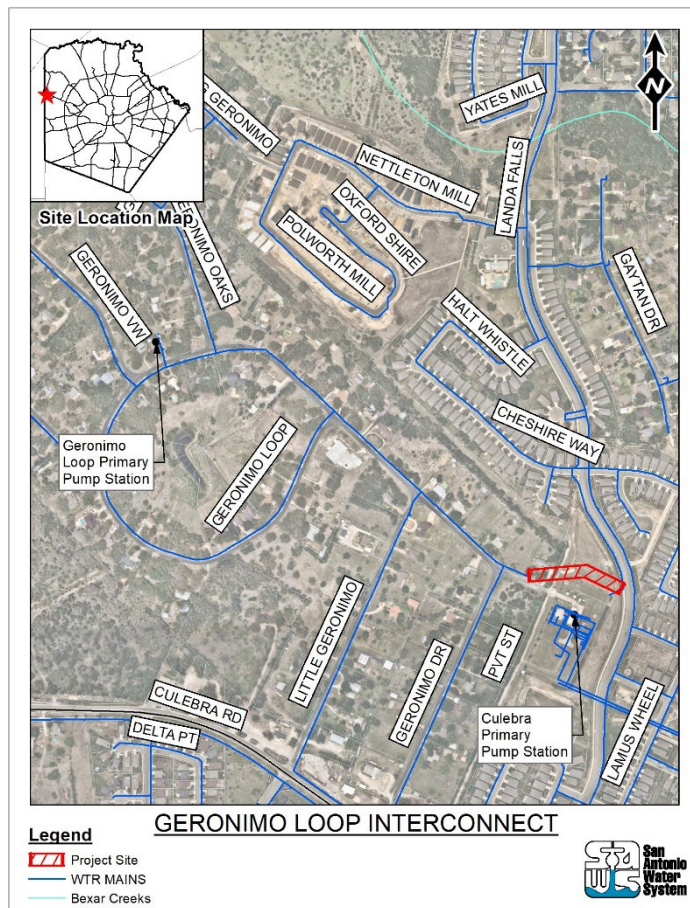
## Galm 24-inch Water Line



- This project installs 6,600 LF of 24-inch transmission main within PZ 1170.
- A new 24-inch water line following along Sunset Ranch starting at the existing 24-inch water line on Sunset Hill and going to Paloma Dr, then following along Beverly Hills Dr from Paloma Dr to FM 1560 where it will connect to the existing 24-inch water line.
- Pressure zones 1170W and 1170 are currently hydraulically disconnected. This project will connect the two pressure zones and allow communication between production facilities.

# Overview of Project Locations

## Geronimo Loop Interconnect



- This project installs a new PRV and piping at the discharge side of the future Water Wheel booster station (PZ 1302) to feed PZ 1233 to provide a more reliable source of water.

- This project will also investigate possible redundant feeds to the Culebra GST or inlet to Water Wheel booster station. Culebra wells appear to be unreliable.

# Project Implementation Schedules

Project	Construction Funding (CIP Year)
2023 Water Main Replacement Package 1	2024
2023 Water Main Replacement Package 2	2024
2023 Water Main Replacement Package 3	2024
2023 Water Main Replacement Package 4	2024
2023 Water Main Replacement Package 5	2024
2023 Water Main Replacement Package 6	2024
2023 Water Main Replacement Package 7	2024
2023 Dead End Water Main Elimination	2025
Galm 24-inch Water Line	2025
Geronimo Loop Interconnect	2025

2023 Water Main Replacement Project



# Design Considerations

- Contract Documents - Quality and attention to detail
- QMP - QA/QC of work and sub-consultant work
- Adherence to design phase implementation schedules
- Design review workshops and site walkthroughs
- Coordination and feedback - SAWS end users
- Engineer responsibility - Compliance with existing rules and regulations
- Coordination with other agencies - TXDOT, TCEQ, COSA, Bexar County, etc.

# Design Considerations

- Site visits - as many as needed
- Construction phasing
- Construction access and staging
- Survey and topographic information
- Impacts to traffic, homeowners and business owners
- Mobilization / demobilization
- Traffic control plans and coordination
- Technical specifications – Unique project components
- Quality and accuracy of OPCCs

# Design Considerations

- SUE to verify existing utilities and avoid conflicts, as needed
- Survey data and benchmarks
- Verify existing services
- Geotechnical Report (with recommendations) and Geotechnical Data Report (GDR)
- Identification of utilities (above and below ground)
- Easements and ROW
- Permits

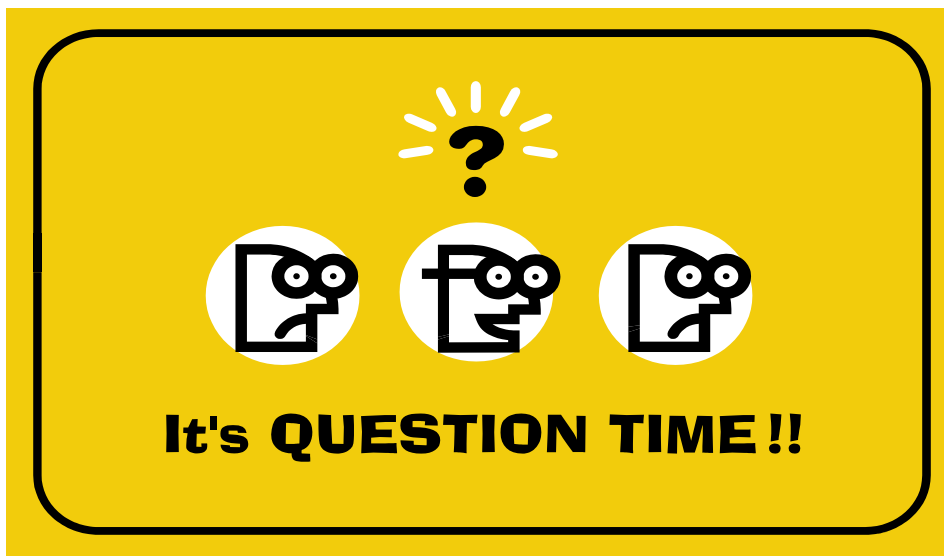
# Cost Estimates – Design Phase

Consultant must develop Engineer's Opinion of Probable Construction Costs (OPCC) for each phase (30%, 60%, 90%, and 100%) of the project as per the recommendations of AACE International as described in Recommended Practices No. 17R-97 and 56R-08

# Cost Estimates – Design Phase

Consultants to develop OPCCs for each design phase as follows:

Design Phase	Estimate Class	Expected Accuracy Range
30% Design	Class 3	L: -5% to -15% H: +10% to +20%
60% Design	Class 2	L: -5% to -10% H: +5% to +15%
90% Design	Class 1	L: -3% to -5% H: +3% to +10%
100% Design and Bid Documents	Class 1	L: -3% to -5% H: +3% to +10%



# 2023 Water Main Replacement Project RFQ

Cristina de la Garza, P.E

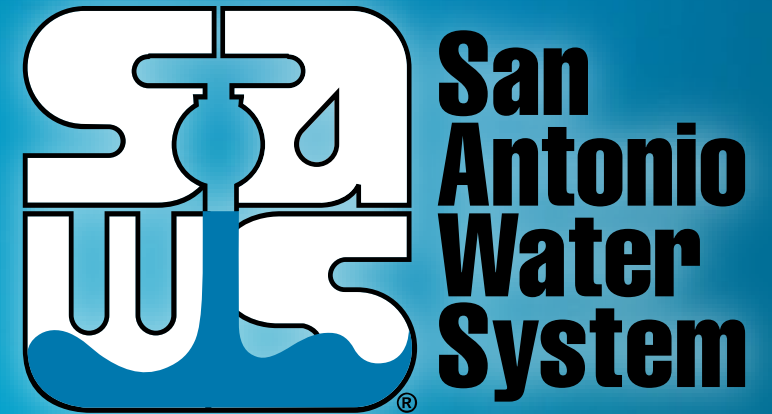
Manager – Water & Sewer Pipelines

Marisol V. Robles

Manager – SMWVB Program

Roxanne Lockhart

Contract Administrator



Non-Mandatory Pre-Submittal Conference  
December 6, 2022

MAKING SAN ANTONIO  
**WATERFUL** 